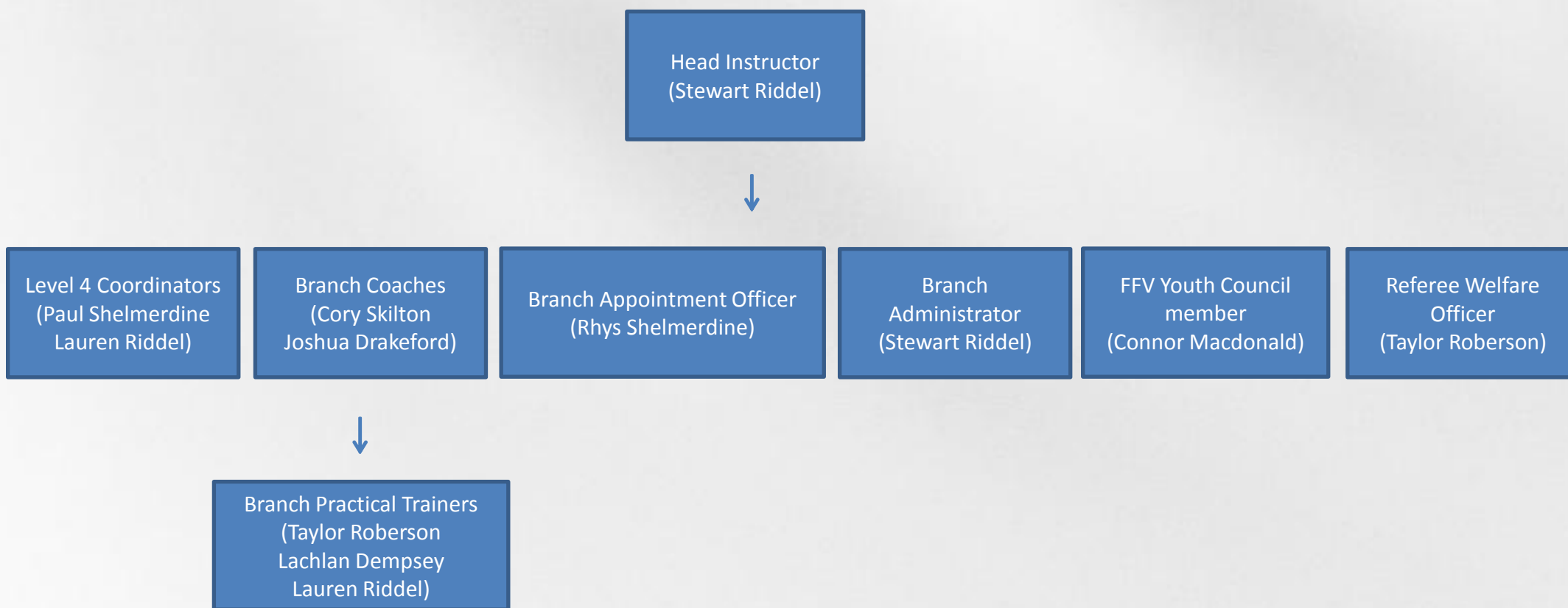


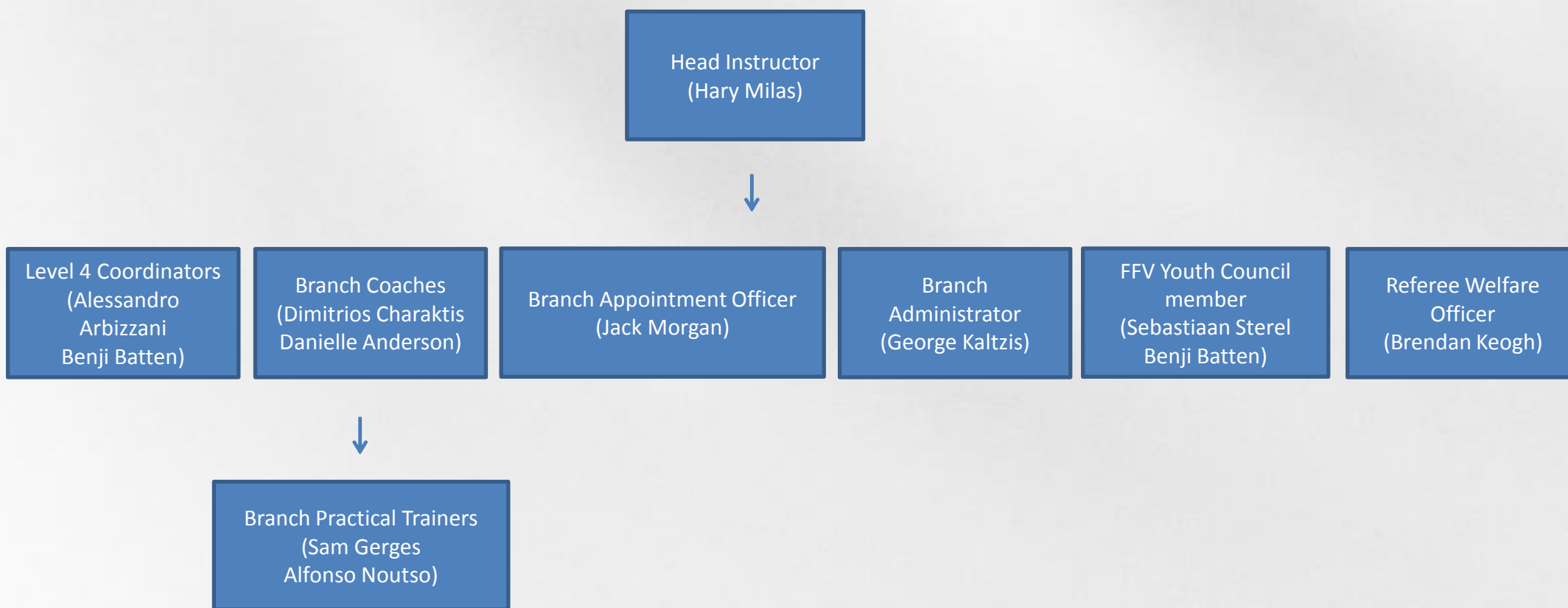


2017 FFV Referees Branch Management Structure

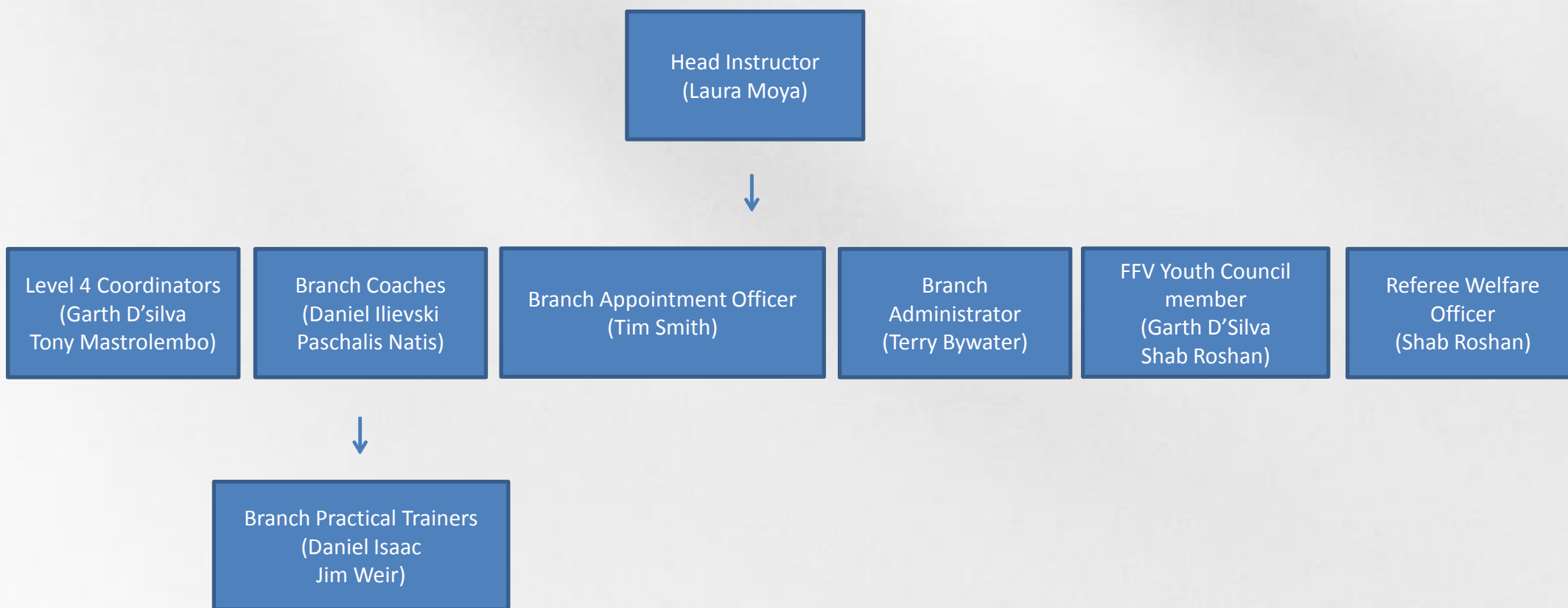
2017 FFV Referees Branch Management Structure – Ballarat



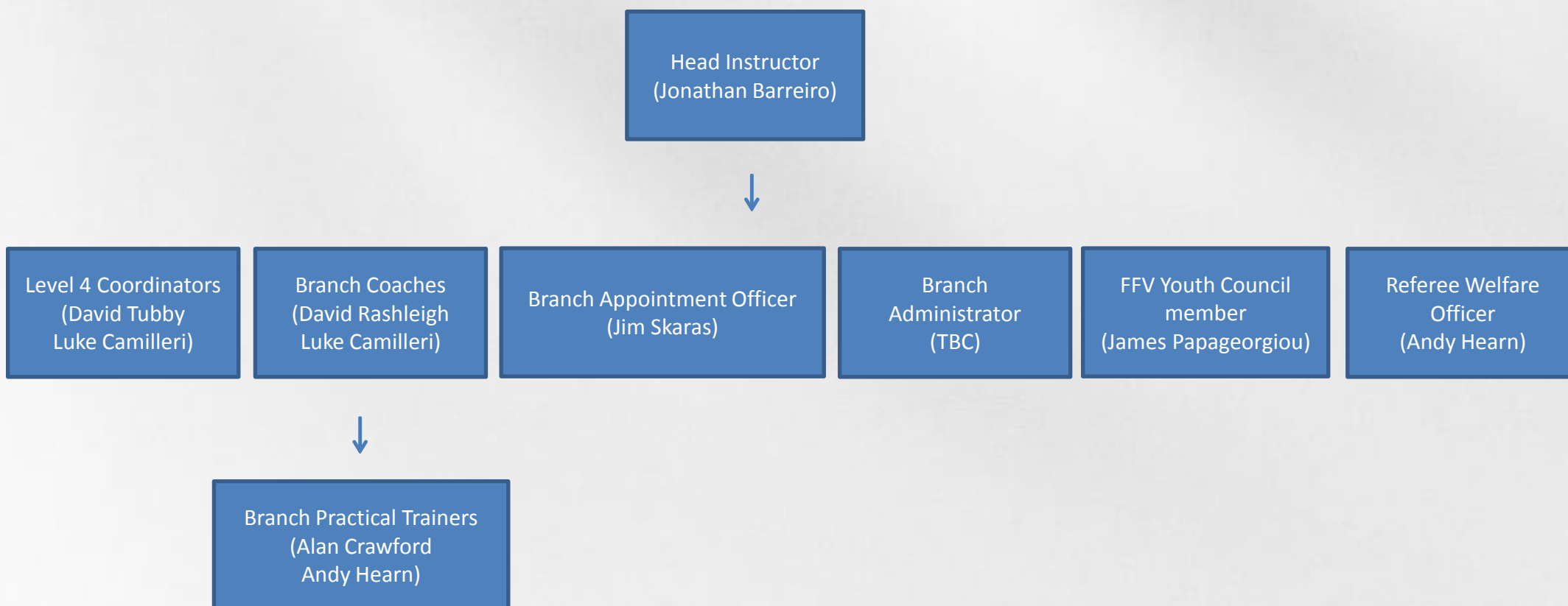
2017 FFV Referees Branch Management Structure – Central



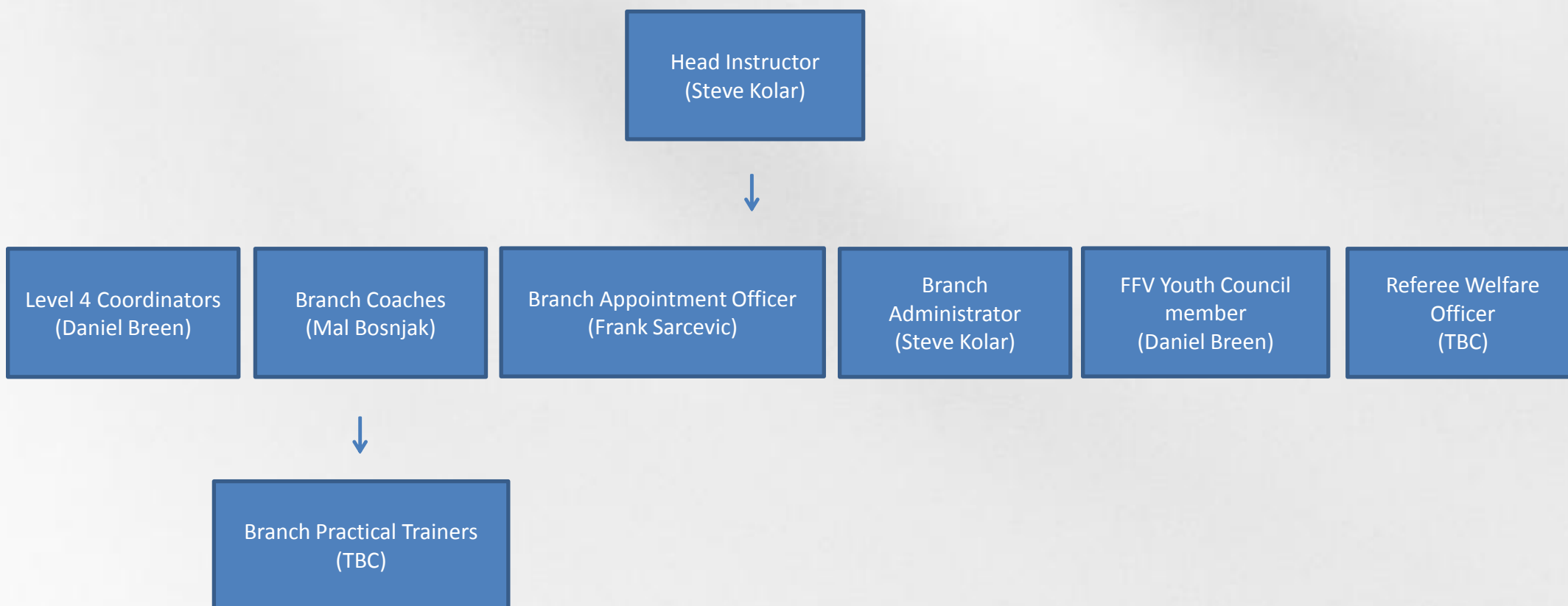
2017 FFV Referees Branch Management Structure – Dandenong Valley



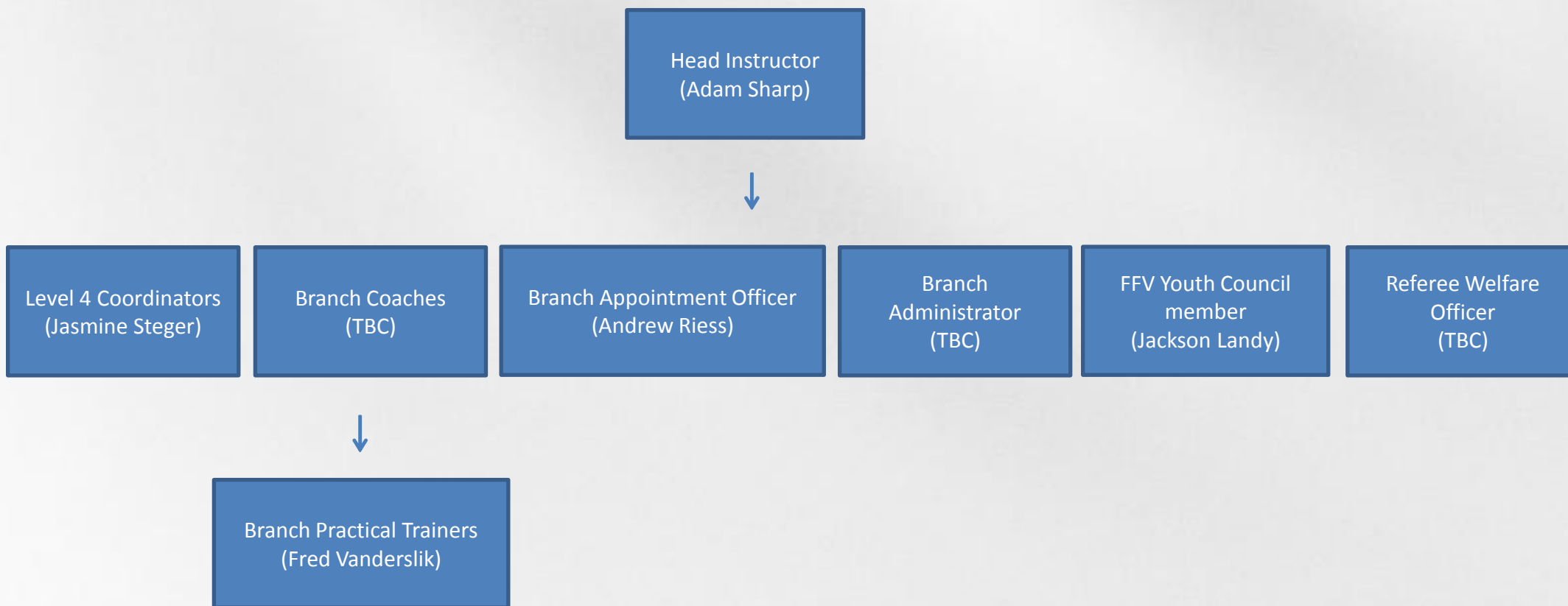
2017 FFV Referees Branch Management Structure – Eastern



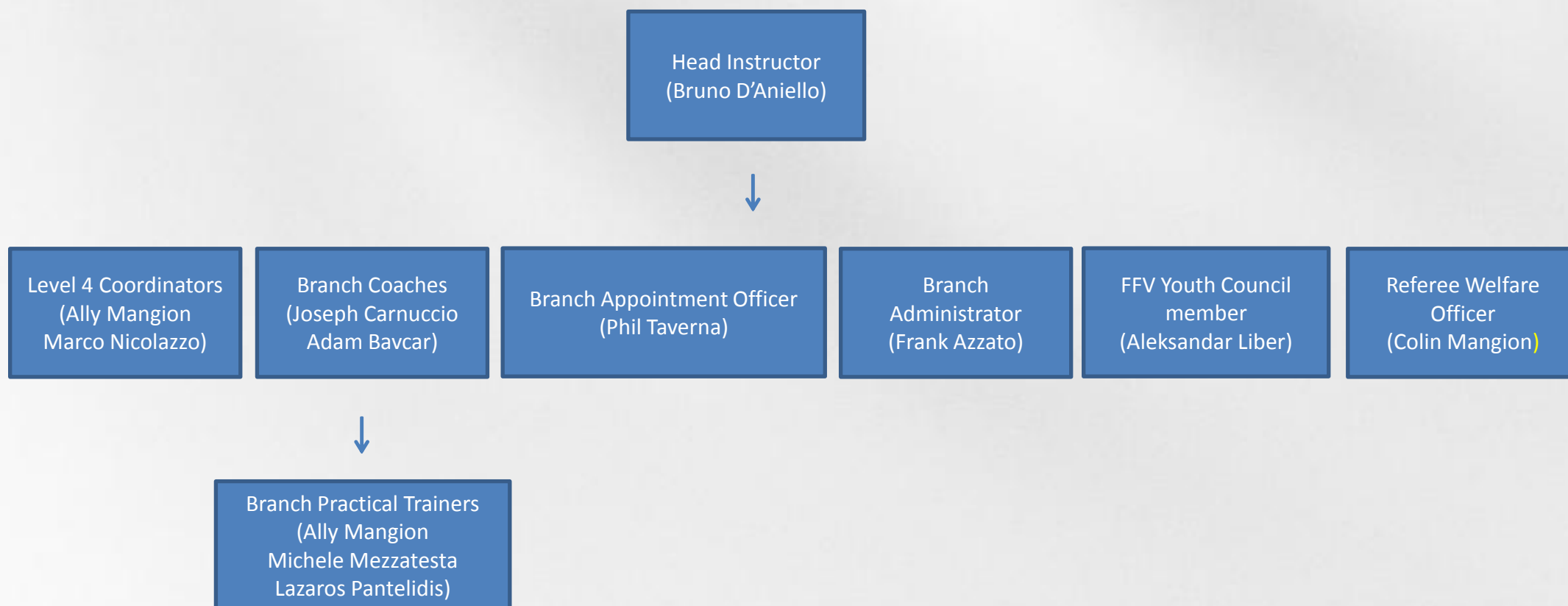
2017 FFV Referees Branch Management Structure – Geelong



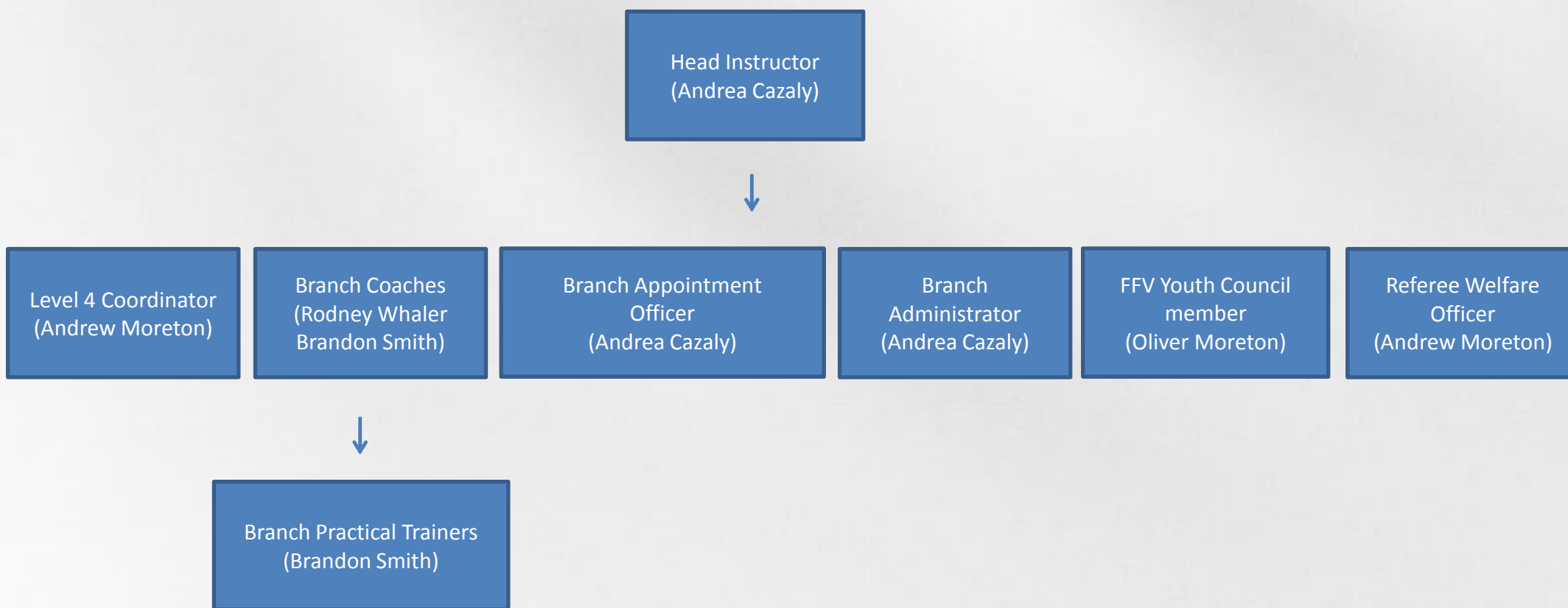
2017 FFV Referees Branch Management Structure – Gippsland



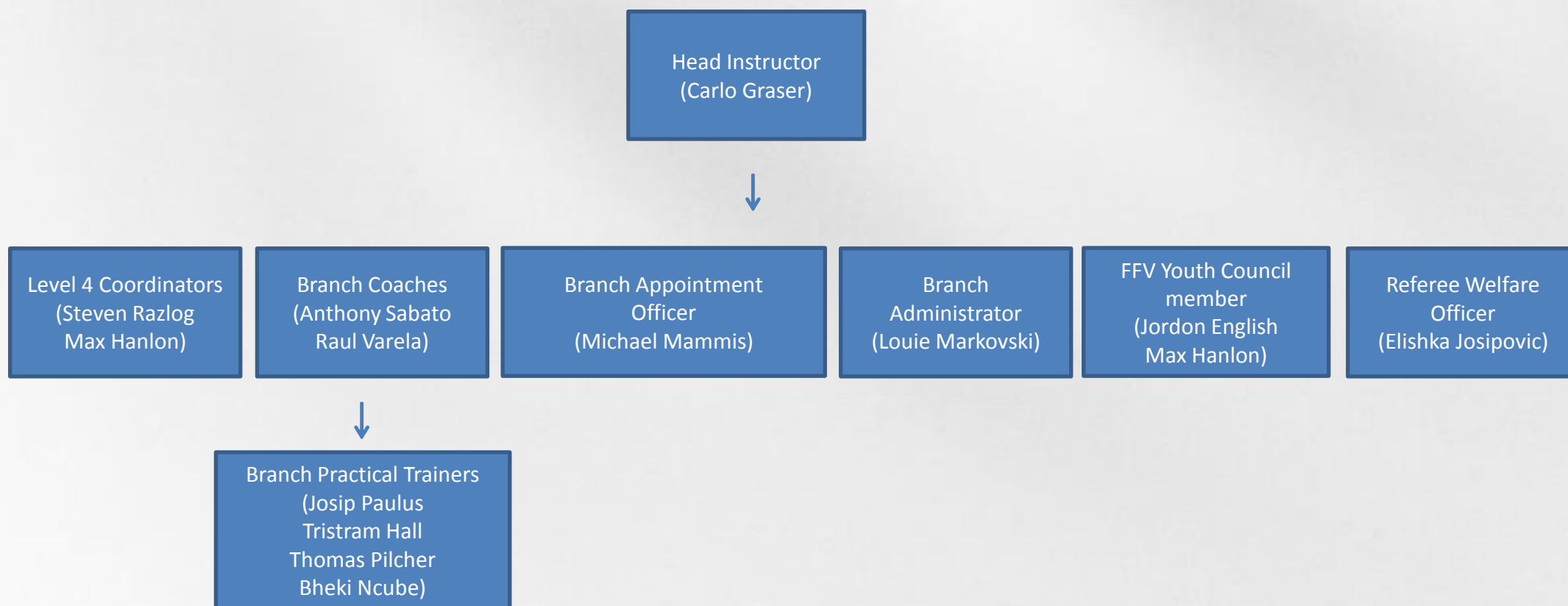
2017 FFV Referees Branch Management Structure – Northern



2017 FFV Referees Branch Management Structure – Peninsula



2017 FFV Referees Branch Management Structure – Western Branch



Additional Guidelines



- All positions will be held from 1st December 2016 till 1st October 2017
- Each applicant must be willing to fulfil all aspects listed within the position description
- All applicants must complete any professional development at the first opportunity in 2017 as directed by FFV

Should you have any questions regarding the 2017 Referee Branch Positions please contact the FFV Referees Department on (03)9474 1800 or email referees@ffv.org.au